

# CDDVDImposer Manual

## Description

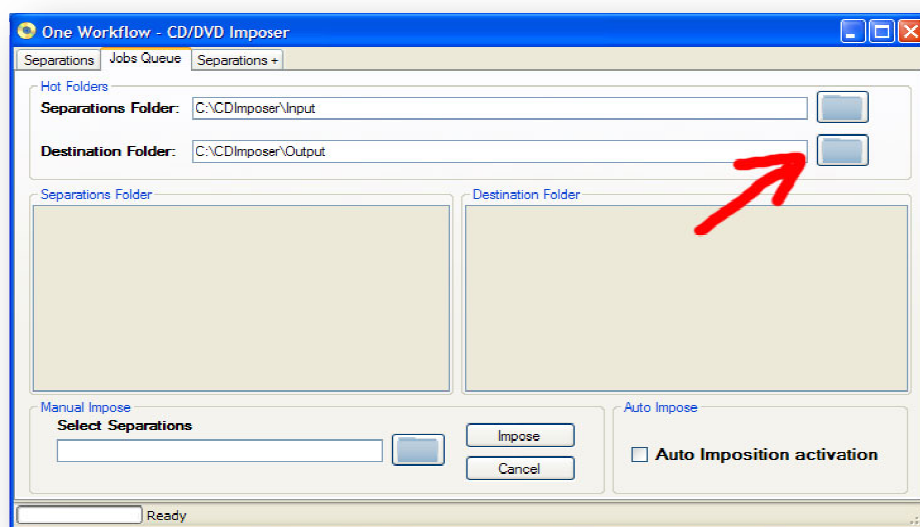
The CDDVDImposer is a tool for the imposing of different separations on the same plate. It was created to simplify the job of the companies involved in the CD/DVD/Bluray printing market.

## Installation

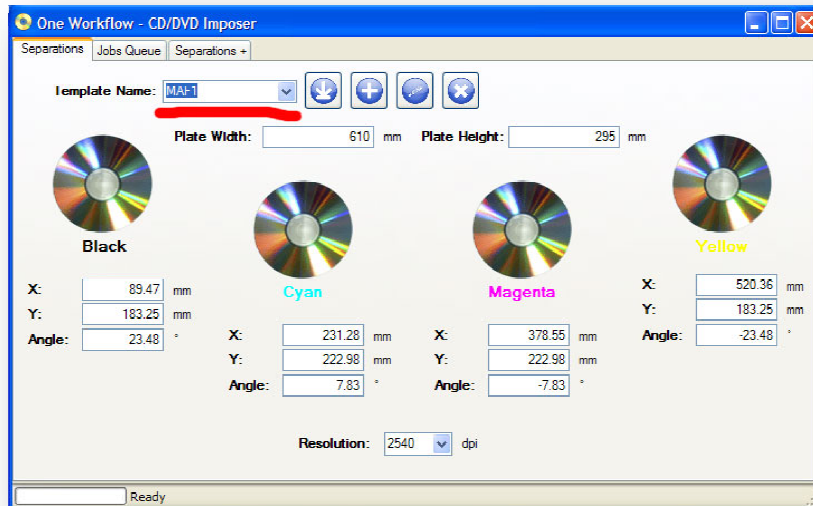
To install the CDDVDImposer is only necessary to copy his complete folder on the main disk of the hard drive (Example C:\DVDImposer\). After the copy start the application CDDVDImposer.exe.

## Configuration

First of all it is necessary to set the input and the output hot folders clicking on the browsing buttons in the picture below.



The Separations Folder is the folder that receives the files. The CD/DVD Imposer supports the bilevel (Monochrome) TIFF file. The actual version of the CD/DVD requires a minimum of 4 files (CMYK) and a maximum of 8 files for each job. To activate the Automatic Mode of the CD/DVD Imposer you have to click on the checkbox "Auto Imposition Activation". In the Automatic Mode the software wait for the files in the Separations Folder and imposes them saving the output file in the Destination Folder. The imposition applied is the one selected in the combo box shown in the picture below. If No template is selected the software uses the default settings.



## Imposition Template Tools

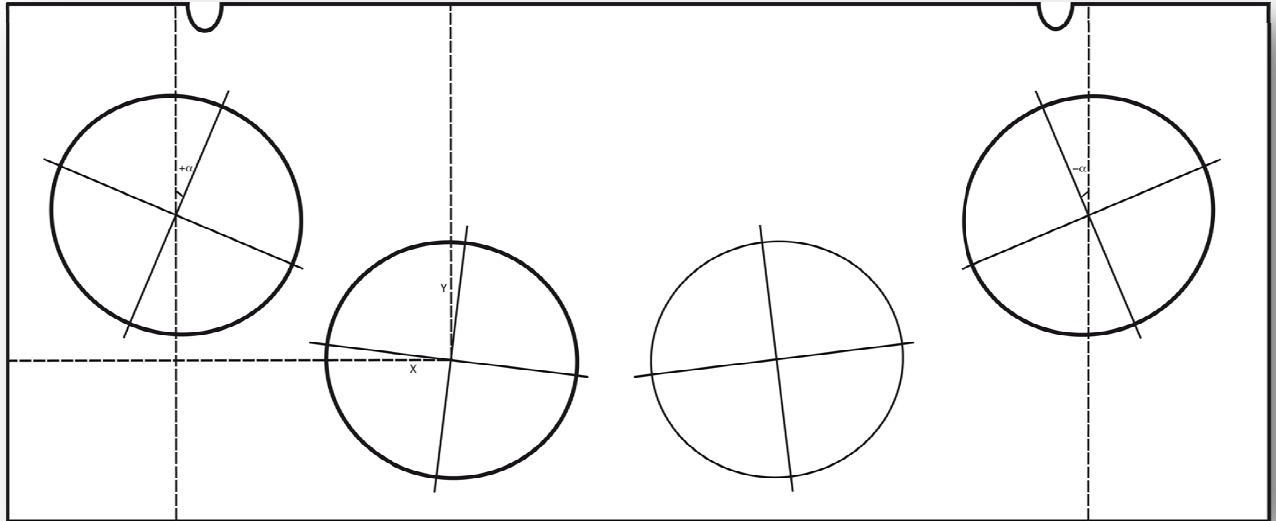
In this section we will see the how to create a new template and how to load, edit and delete an existing template. An imposition template is composed by the following information:

1. Size (width and height) of the output plate (in mm)
2. Coordinates (X and Y) of the position of each separation inside the plate. The Y is the distance measured in mm from the punching edge to the center of the separation. The X is the distance measured in mm between the left edge of the plate (putting the punching edge on the top) and the center of each separation. See the picture below.
3. Rotation angle of each separation. The angle is measured between the ideal vertical line that pass through the center of the separation and the ideal vertical axis of the separation. The angle can be positive or negative. If the vertical axis of the single separation is on the right side of the vertical axis of the plate that pass through the center of the separation, then the angle is positive, otherwise, if the vertical axis of the single separation is on the left side of the vertical axis of the plate that pass through the center of the separation, then the angle is negative. See the picture below.

To create a new template insert a name in the Template Name field. Insert also all the information about the separations (coordinates and angles), the size of the plate, and the resolution. BE CAREFUL IF THE LANGUAGE OF YOUR PC IS NOT ENGLISH! IN THIS CASE YOU HAVE TO USE THE COMMA AS DECIMAL SEPARATOR FOR THE COORDINATES AND THE DOT AS DECIMAL SEPARATOR IN THE ANGLES.

After that, click on the plus button to create the template. Now you should have a new template in the combo box list.

To delete an existing template, select it from the list and click on the x button. To load an existing template, select it from the list and then click on the arrow button. To edit an existing template, load it first and then change all the fields you need to change. After that click on the pen button to save the changes.



The CD/DVD Imposer can impose also 8 separations in the same plate. To do that close the CD/DVD Imposer and open the file CDDVDImposer.exe.Config (it is an xml file). Find out the option Sep8. If it is set to false, set it to true. Save the file and restart the CD/DVD Imposer. The fields of the tab Separation+ should enabled so you can set the info for 8 separations on each template.

