

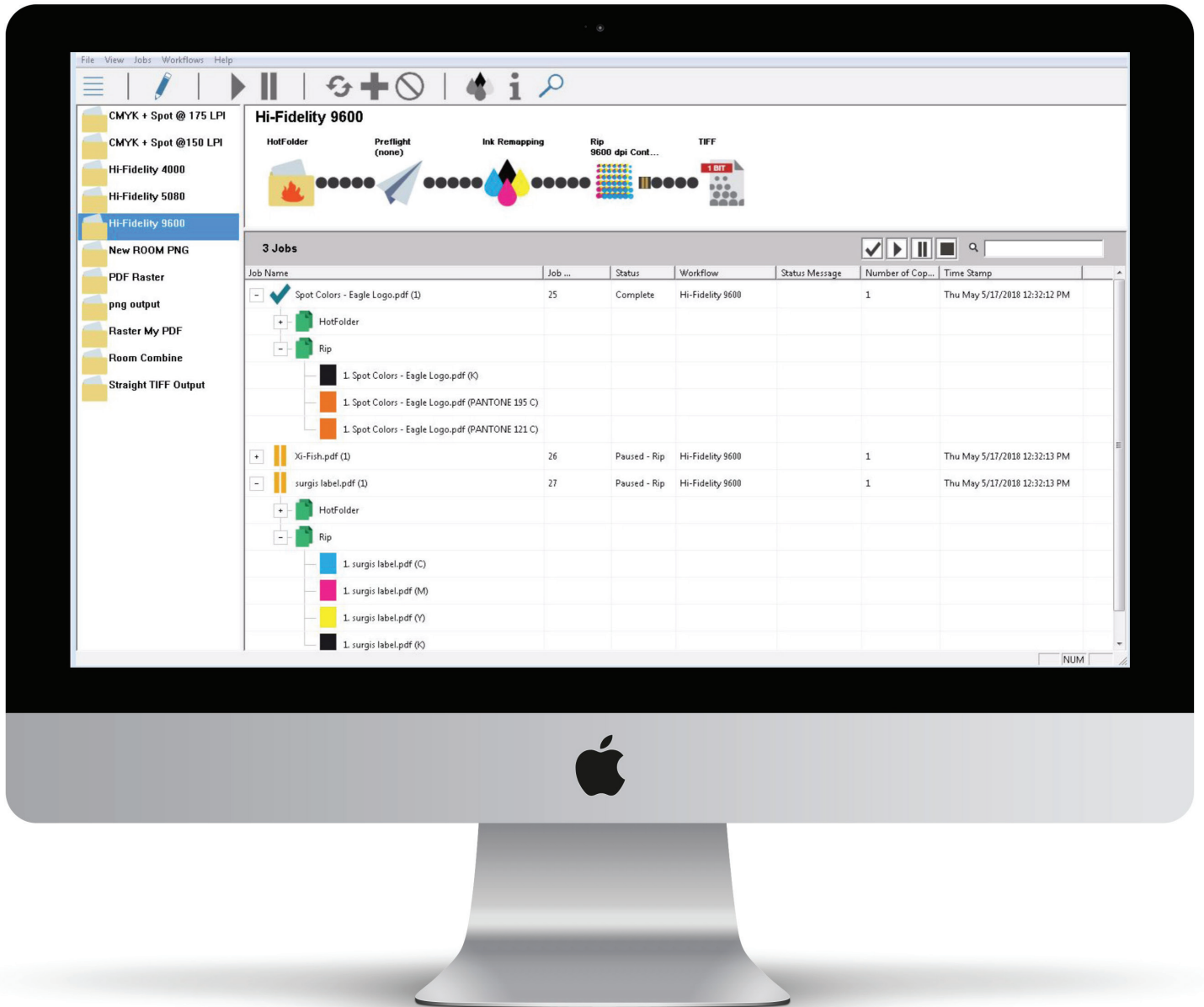


Navigator

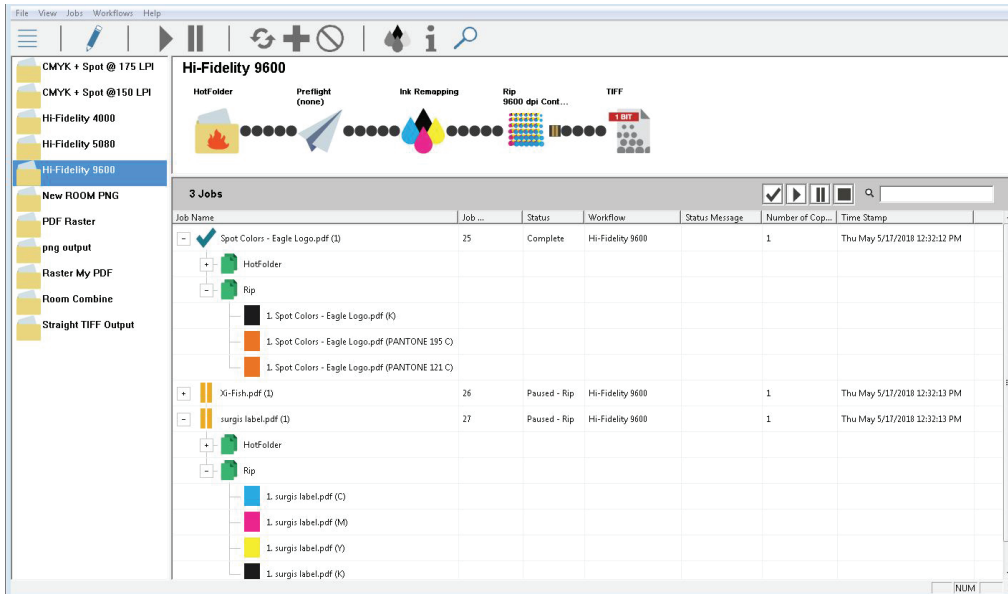
Flexo Suite



**A new direction for
*Flexo Prepress***

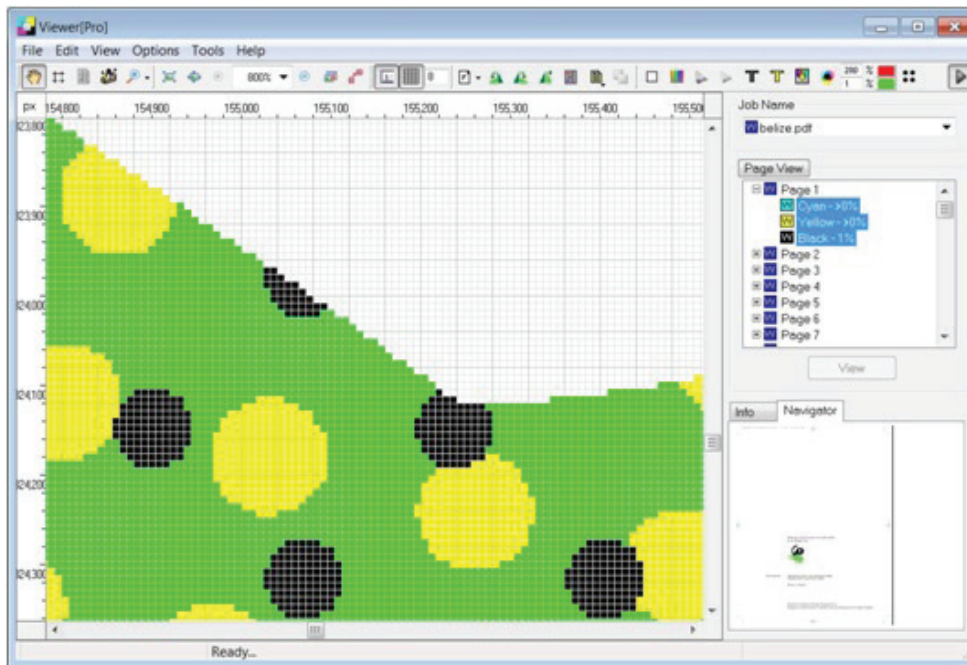


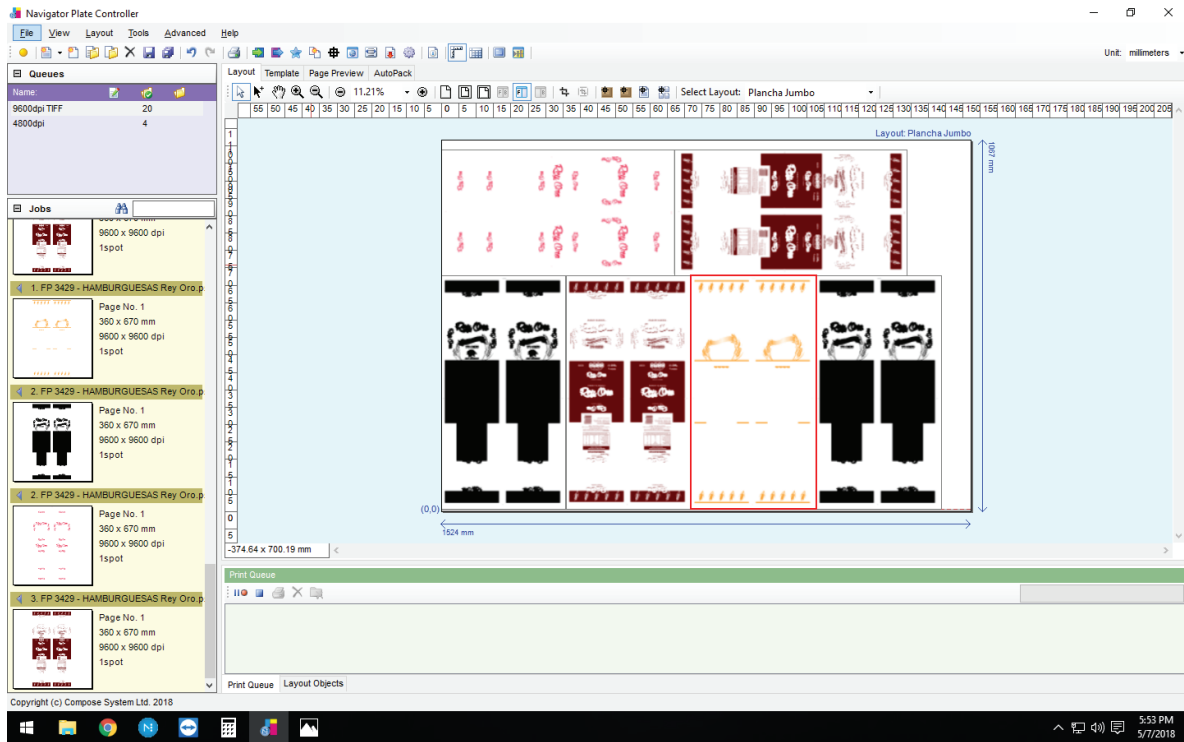
Navigator Flexo Suite is a tightly integrated collection of workflow tools designed specifically for use with today's Flexographic Computer-to-Plate systems. It's a modular concept that allows the user to create precisely the functionality they require, based on the type of printing they do.



Navigator Workflow

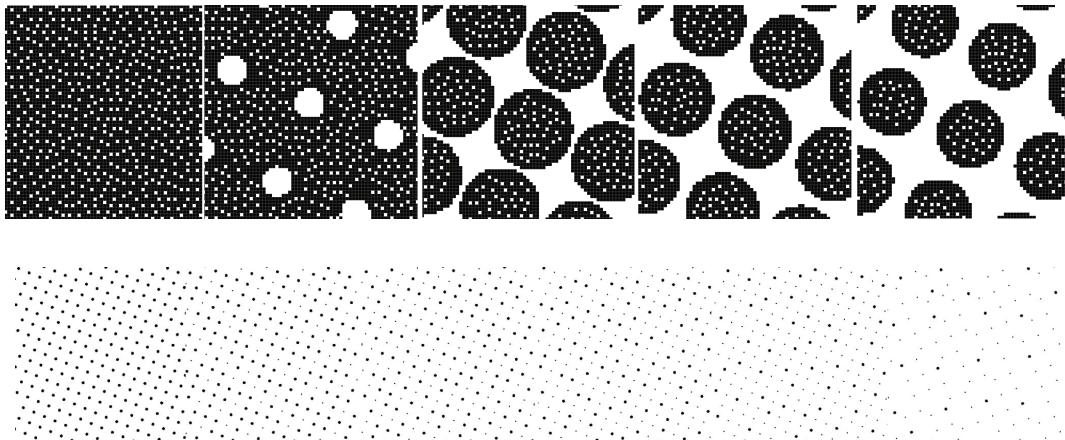
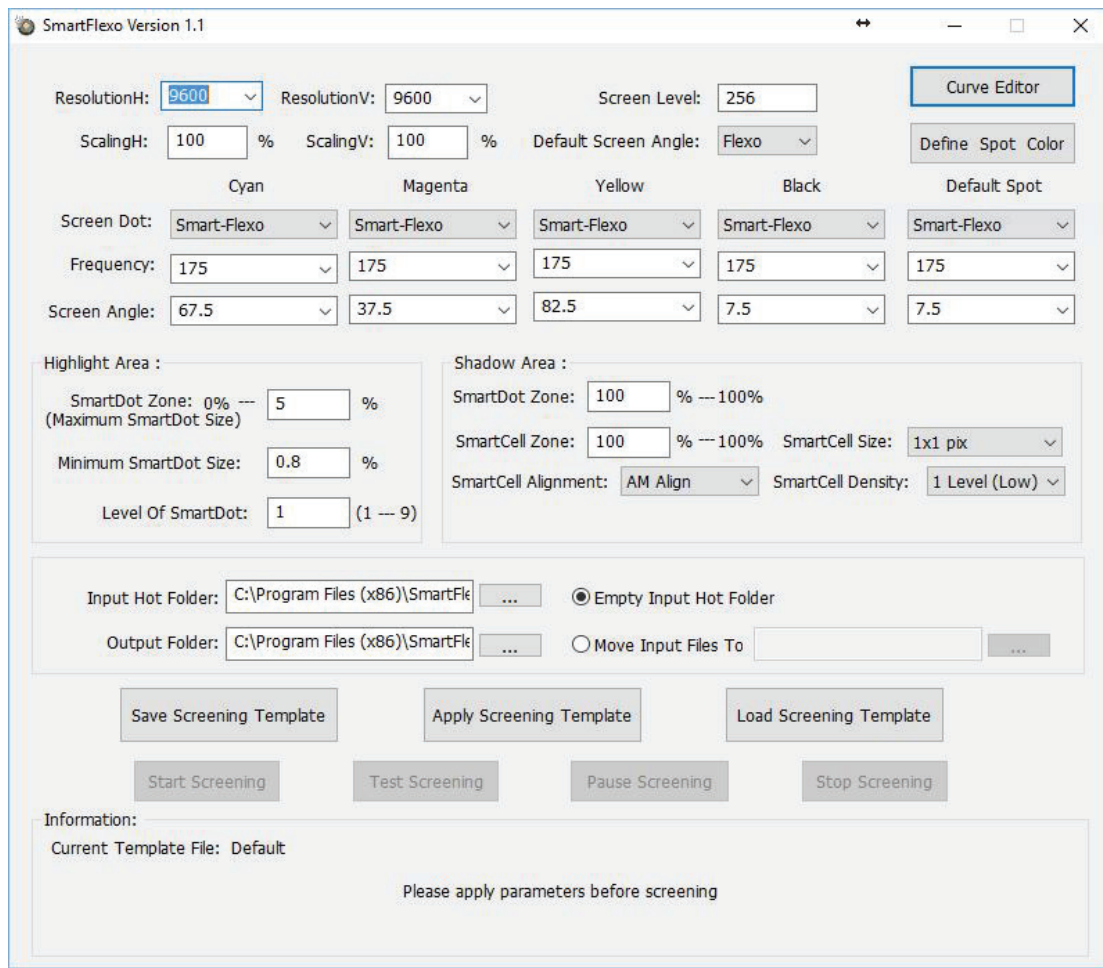
Intuitive, easy to configure and use, Navigator Workflow is a Client-Server based system. Clients can be installed on Mac and PC workstations throughout the shop and operators can maintain complete control of their jobs from submission to completion. Jobs are added to the workflow through drag & drop, hot folders, or direct print. As the system processes the jobs through each step, operators see the progress in real time. The advanced, Pixel Level Preview adds another level of precision and confidence. Once completed, built-in archiving saves each job for reprint purposes.





Navigator Plate Controller

Tasked with assembling all your jobs and their various plates, Navigator Plate Controller employs a simple user interface along with drag & drop functionality. Operators select the one-bit TIFF separations from incoming jobs and populate the plate to save as much material as possible. Move, rotate, and add jobs simply by clicking and dragging them into position. Use the Auto Crop button to generate an output image that prevents wasting unused plate areas.



Optional SmartFlexo Screening

A truly-intelligent screening module that is completely configurable based on your printing conditions. Program your minimum dot, supporting dots, dot shapes, and alignments. Choose precisely where you want the system to change from AM to FM dots for better highlight and shadow control. Tell the system to remove pixels for better coverage in solids. You can even automate the process through selectable screening templates. SmartFlexo puts controlled precision into your prepress process.

Navigator RIP

The first PDF 2.0 compliant RIP available, Navigator's Harlequin pedigree sets it apart from the competition. Xitron has sold over 35,000 Navigator RIPs around the world due to its consistency, speed, and rendering accuracy. Built-in features include user-defined resolutions up to 9,600 dpi, Harlequin Precision Flexo Screening with selectable dot shapes, and the ColorPro Color Management Module.

Other workflow options include:

Raster PDF soft-proofing, job pre-flighting, ink remapping, additional user clients, and color-managed output to a variety of popular Epson SureColor printers.

System Requirements

PC

3 Ghz Core i5
500 GB to 1 TB for installation drive
3 Available USB 2.0 ports for dongles and interface
Windows 7 Professional 32 or 64-bit, Windows 8
Minimum 4 GB RAM

Mac Client

OS X 10.7



MAKING PREPRESS AFFORDABLE

