



# NAVIGATOR NORTHSTAR



**NAVIGATOR**

▶ ACCURATE COLOR - INKJET & TONER

# NAVIGATOR NORTHSTAR

## POINTING THE WAY TO COLOR ACCURACY

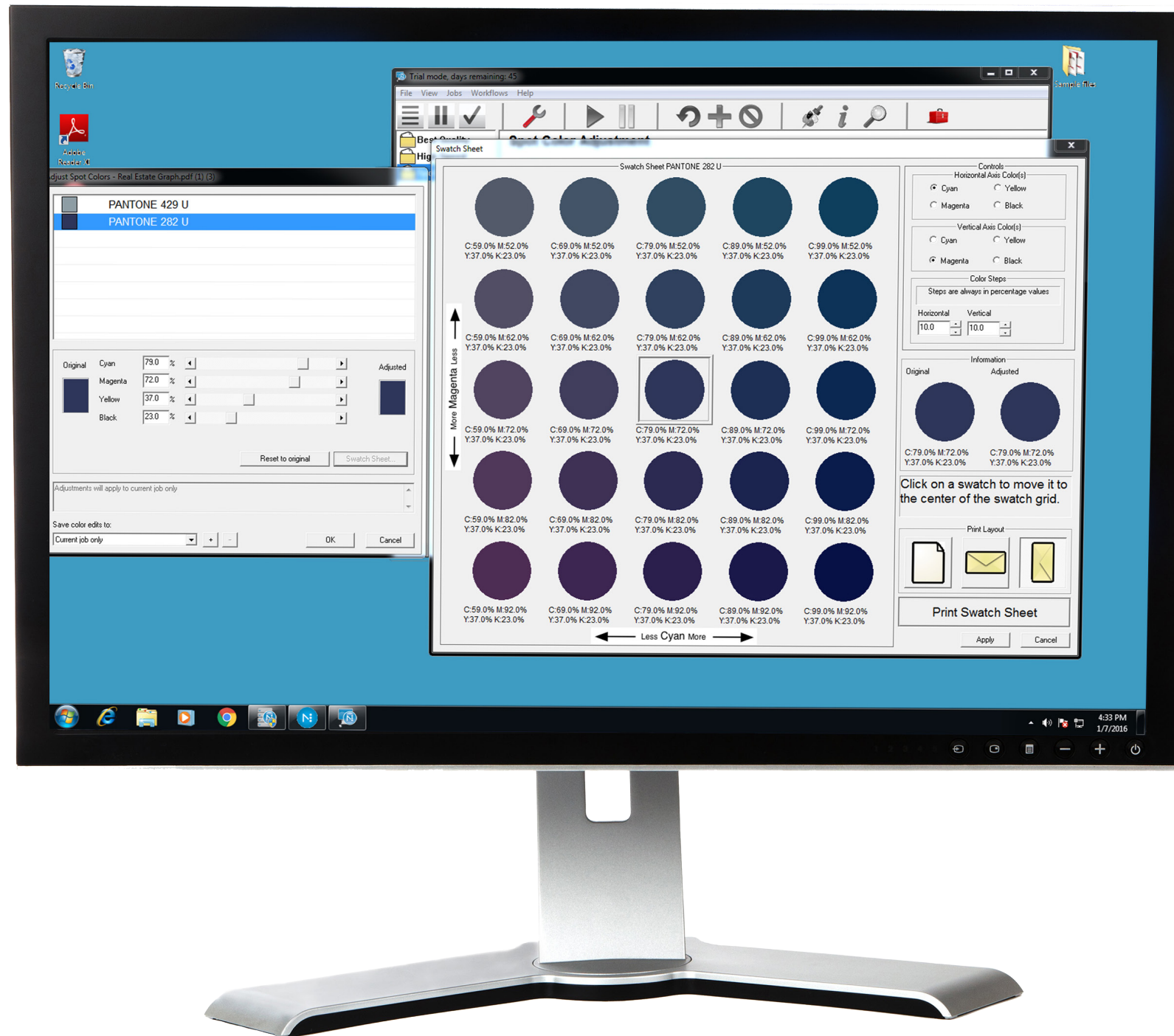
**NAVIGATOR NORTHSTAR** was designed to deliver accurate, predictable color to the desktop printer market. Using a simple graphical interface, precise color control no longer requires an educational journey through gamuts, standards, and profiles. Operators respond quickly to the intuitive design, reducing the learning curve and fostering a nearly immediate increase in productivity.

**SPOT COLOR MATCHING** - Navigator Northstar helps you match a job's spot colors through an interactive display. Print a swatch sheet of the Pantone colors; choose the result that matches the intended output and release the job for printing. It's that simple. Curated spot color libraries and archive job settings further streamline the process for repeat jobs.

**INTUITIVE GUI** - An uncomplicated interface means less time training and more time producing. Navigator Northstar's GUI was founded on the remarkably successful Navigator Workflow used in thousands of printing companies worldwide. Instantly recognizable and intuitive, operators adapt quickly to its functionality.

**MULTI-PLATFORM (MAC OR PC) COMPATIBLE** - Navigator Northstar's client-server architecture means that jobs can be submitted, viewed, and processed from both Macs and PCs anywhere on the network. Additional client licenses are available for high-production environments.

**GRAPHIC MERGE FUNCTION** - Easily combine graphics such as logos or mailing indicia for high-speed envelope printing on Memjet and OKI envelope printers.



**FASTEST PROFESSIONAL GRADE RIP AVAILABLE** - Based on the Harlequin RIP core, Navigator Northstar's RIP is recognized as the fastest of its kind. Typical job processing speed is measured in seconds, even for complex, image-rich work. Navigator is a native PDF interpreter that runs on 64-bit Windows 7, 8 or 10. Workflow pre-flight options are available.

**GLOBAL OR SPECIFIC COLOR ADJUSTMENT** - Choose between Spot Color Matching or Global Color Adjustments through Navigator Northstar's color tools. Whether the job contains RGB, CMYK, spot colors, or a combination, getting the right color on paper is quick and painless.

**ECONOMICAL - LOW COST OF OWNERSHIP** - Navigator Northstar's low cost of ownership means it pays for itself quickly. Increased productivity, a short learning curve, and ease of use contribute to a reduced cost per piece, increasing your margin and making you more competitive.

**NETWORK CONNECTIVITY** - Connect to your printer through your network or the USB port of the platform. Both methods are easily configurable and can be completed in seconds.

**VARIABLE DATA OPTION** - By adding Xitron's Variegator variable data software, you can turn your Northstar printer into an on-demand marketing tool. If you are already using variable data software from another vendor, Navigator probably supports it.



## NAVIGATOR NORTHSTAR COMPATIBLE DEVICES

### Envelopes/Flyers:

Astrojet M1  
Colordyne 1600S  
Formax Colormax7  
Neopost Mach 5  
Printware iJetColor  
RTI-Digital Vortex 850S

### Industrial Envelope:

Astrojet M-2  
Neopost Mach 8

### Labels:

Astrojet M1C  
Colordyne 1600C  
Formax ColormaxLP  
Neopost Mach X  
Printware iJet Color Label Press  
RTI Vortex 850R  
RTI Vortex 851R  
Trojan One  
Weber QuadraColor  
Afinia DLP-2000 \*  
Afinia L801 \*  
VIP Color VP7000 \*

*\*Coming soon. Check with Xitron for availability.*

### Multipurpose

Oki 931/941

## MINIMUM RECOMMENDED SYSTEM REQUIREMENTS

### SERVER PC

- Windows PC running Windows 7 Pro or Windows 8/8.1; with full admin rights
- 64-bit Operating System Only
- 160 GB Hard Drive (500+GB recommended)
- 3 GHz Dual/Quad Core Processor (SSE 4.2 Required), Core i5 or i7 recommended
- DVD ROM Drive
- 2 Available USB 2.0/3.0 ports
- 4GB RAM (8 GB recommended)
- 100/1000 Network Interface Card with an active "network" connection

### WORKFLOW PC CLIENT

- 2 GHz Dual Core or higher processor
- DVD ROM Drive
- Windows PC Running Windows 7 Pro Windows 8/8.1 Pro, Windows 10 or MAC running OS X 10.7 - 10.11
- 2 GB RAM
- 100/1000 Network Interface Card with an active "network" connection

NAVNSTR-0317



MAKING PREPRESS AFFORDABLE

4880 Venture Drive, Suite 500  
Ann Arbor, Michigan 48108  
Phone: 734-913-8080  
Fax: 734-913-8088  
[www.xitron.com](http://www.xitron.com)